

**Revised  
Oklahoma COVID-19  
Hospital Surge Plan  
Including Contracted Capacity Beds**

*Revised 8/5/20*



**OKLAHOMA**

# Oklahoma Hospital Surge Plan Objectives

1. Protect the health and lives of Oklahomans by ensuring each patient goes to the closest most appropriate hospital in the right amount of time with the right treatment,
2. Ensure the stability of the health system for all patients,
3. Increase hospital capacity and capability to accommodate a surge of critically ill patients,
4. Protect the wellness of all front-line workers.

# Oklahoma Hospital Surge Plan Principles

*(All healthcare facilities expected to provide care to COVID patients to their capability and capacity)*

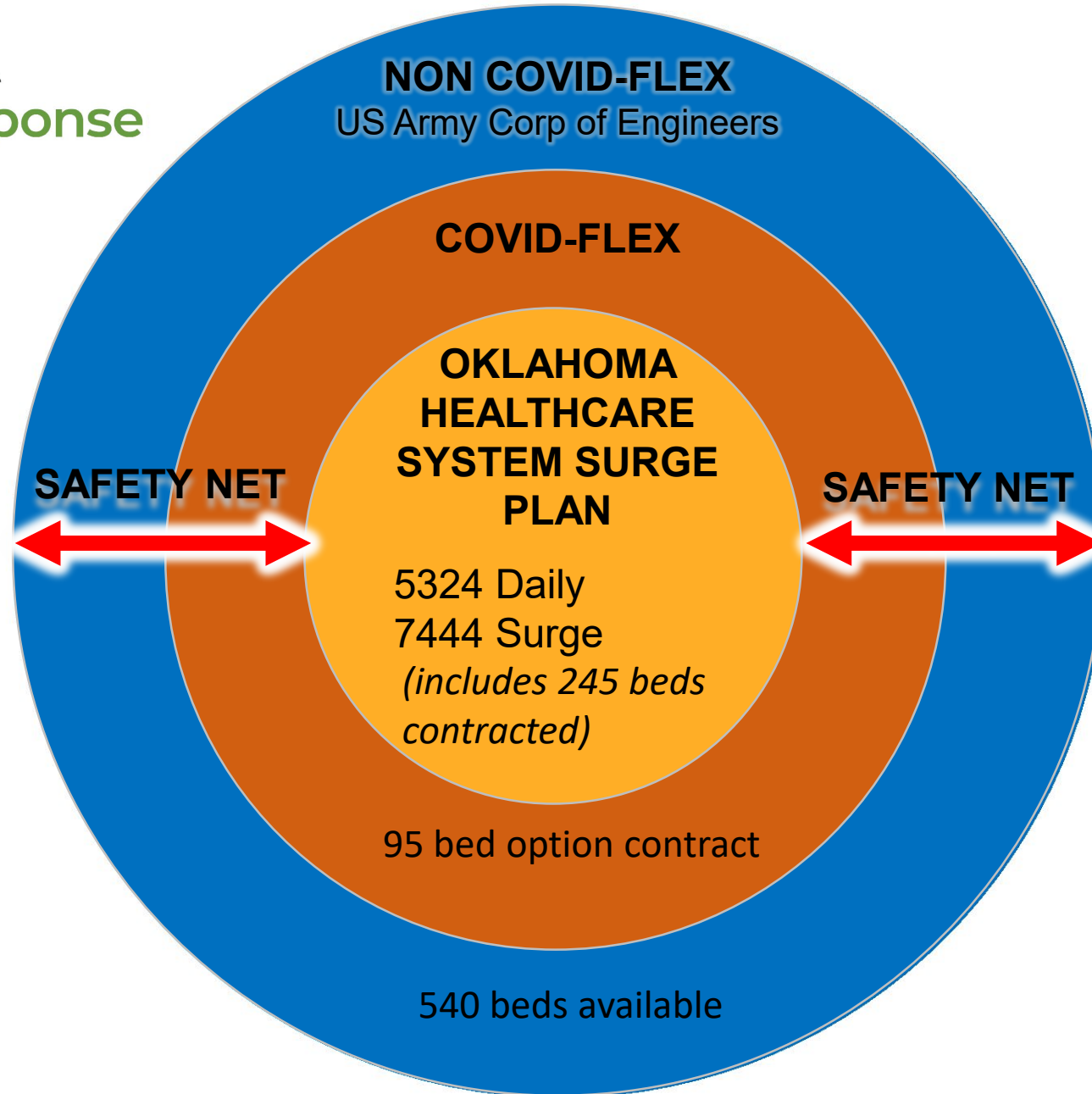
1. There are COVID (+) patients in all 8 geographic regions of Oklahoma. All regions have hospitals with ICUs and ventilators;
  2. Hospitals in non-metro regions (outside of Region 7-Tulsa and Region 8- OKC will provide care to COVID patients within their home region as appropriate;
  3. Regions 7 and 8 have each created a region-specific progressive surge plan:
    - All hospitals in Regions 7 & 8 will care for non-COVID and COVID to 100% capacity
    - Upon 100% capacity of Region 7 & 8 hospitals will:
      - a. Region 7 (Tulsa): OSU Medical Center will open 125 beds for COVID patients
      - b. Region 8 (OKC): Six hospitals will each open 20 additional beds for COVID patients
      - c. Implement internal strategies to create capacity
- 

Possible EO Required for the following measures:

4. Utilize Specialty Hospitals
5. Alternative care sites will be mobilized



**OKLAHOMA**  
**COVID Response**



**SAFETY NET**  
Not intended to displace patients



# Defining Surge: A Tiered Action Plan

Tier	Tier Action Plan Trigger	Tier Goals
Tier 1	Preparing for Imminent Patient Surge	<ul style="list-style-type: none"><li>• Assessment of resources/needs</li><li>• Estimation of resource needs</li><li>• Procurement of resources (human, supply chain, equipment)</li><li>• Data collection and logistics planning</li></ul>
Tier 2	60% Total Hospital Bed Capacity Reached <i>(staffed beds, med-surg and ICU)</i>	<ul style="list-style-type: none"><li>• Continued monitoring of surge data</li><li>• Movement of resources into place</li><li>• Ensure human resources positioned</li><li>• Surge evaluation monitoring on EMResource</li></ul>
Tier 3	90 -140+% Hospital Bed Capacity Reached <i>(staffed beds, med-surg and ICU)</i>	<ul style="list-style-type: none"><li>• Full activation of clinical care and human resources</li><li>• Continued monitoring of logistics (EMResource, TReC)</li><li>• Utilizing alternative care sites</li></ul>
Tier 4	50% Hospital Bed Capacity	<ul style="list-style-type: none"><li>• Normalizing to pre-COVID-19</li></ul>

# Revised Tiered Action Plan for Hospital Surge (8/4/20)

Tier	Tier Action Plan Trigger	Tier Interventions
<b>Tier 1</b>	Care as usual, monitor bed capacity	<ul style="list-style-type: none"> <li>• Assess resources &amp; estimate needs (human, supplies, equipment)</li> <li>• Procure resources</li> <li>• Collect data</li> <li>• Continue logistics/planning</li> </ul>
<b>Tier 2</b>	Capacity in Regions 7 & 8 reach 100% capacity	<ul style="list-style-type: none"> <li>• Region 8: Activation of enhanced capacity (120 beds in 6 contracted hospitals)</li> <li>• Region 7: Activation of OSU Medical Center (125 beds)</li> <li>• Determine process to expedite patient transport as systems reach capacity</li> </ul>
<b>Tier 3</b>	<ul style="list-style-type: none"> <li>• Capacity in Region 7&amp; 8 at 100%</li> <li>• Contracted hospitals with additional capacity in Regions 7 &amp; 8 at 100% capacity</li> </ul>	<ul style="list-style-type: none"> <li>• All hospitals initiate internal surge plans with multiple interventions</li> <li>• OSDH and/or military assistance in evaluating real-time bed capacity in regions in real-time</li> <li>• Utilization of specialty care hospitals</li> </ul>
<b>Tier 4</b>	<ul style="list-style-type: none"> <li>• Capacity in Region 7 &amp; 8 at 100%</li> <li>• Contracted hospitals with 100% additional capacity in Regions 7 &amp; 8</li> <li>• Specialty hospitals at 50% capacity</li> </ul>	<ul style="list-style-type: none"> <li>• Alternative care sites established by the military</li> </ul>

## TIER 3

### Internal hospital surge plans may include, but are not limited to:

- ▶ Transfer of patients to outlying facilities
- ▶ Discharge of patients to LTAC or SNF facilities
- ▶ Reactivate previously evacuated patient care areas
- ▶ Combine similarly-diagnosed patients within one hospital within a hospital system
- ▶ Adjusting the nurse: patient staffing ratio/change care model
- ▶ Reassignment of clinic/other unit or services staff
- ▶ Selectively decrease non-emergent surgeries/procedures/services in a progressive manner to create needed capacity



# TReC and Regional Trauma Plans Adapted to Respond to COVID-19 Hospital Surge Plan

- Hospital capacity and capability assessed in each region for:
  - Staffed ICU and med-surg beds, total ventilators
  - Resource needs (PPE, staffing and equipment)
- TReC screening criteria for appropriate patient transfer created, additional Medical Direction staff requirements
- EMResource monitors hospital capacity/capability, EMS positioning and availability, ventilator & PPE resource availability

Region Default																
invalid contact info show map print excel refresh help																
Update 1: FYI: OSDH-EMS Agency COVID-19 Response Flowchart		Facility Guidance on Visitation		Update 2: COVID-19 Daily Hospital Survey-2 separate surveys		4 ST JOHN-P I & II/HILLCREST & HILLCREST SOUTH-P II		4 MERCY		COVID-19 EMS Survey		COVID-19 Hospital Bed Survey (04/04/2020)		COVID-19 Hospital Ventilator & PPE Survey (04/04/2020)		
Region 8 (OKC)	Trauma Level	ED Status	Hosp Status	NEDOC'S	CT Scan	Srg	Ortho	NeuSrg	Neuro	OMF	Hand	Card	NeoNat	OBI/GYN	Comment	
AllianceHealth Midwest	III	Open	Open	0	Yes	Yes	Yes	No	No	N/A	No	Yes	No	Yes		
AMG Specialty Hospital - Mercy Campus	--	Open	Open	0	No	N/A	N/A	N/A	N/A	N/A	No	N/A	N/A	N/A	ED Select has expired	
Community Hospital	IV	Open	Open	--	Yes	Yes	Yes	N/A	N/A	N/A	No	N/A	N/A	N/A		
INTEGRIS Baptist Medical Center	III	Open	CAUTION	--	Yes	Yes	Yes	Yes	Yes	Yes	Yes	Yes	Yes	Yes	NICU saturation	
INTEGRIS Baptist Portland Avenue	III	Open	Open	76	Yes	Yes	Yes	No	Yes	No	No	Yes	No	No		
INTEGRIS Community Hosp-Council Crossing	--	--	--	--	--	--	--	--	--	--	--	--	--	--		
INTEGRIS Health Edmond	III	Open	Open	62	Yes	Yes	Yes	No	Yes	No	No	Yes	Yes	Yes		
INTEGRIS Southwest Medical Center	III	Open	Open	77	Yes	Yes	Yes	No	Yes	N/A	No	Yes	N/A	Yes	ICU HOLDS IN ED	
McBride Orthopedic Hospital	IV	Open	Open	--	Yes	Yes	Yes	N/A	No	N/A	No	N/A	N/A	N/A		



# Statewide Inventory of Hospital Beds

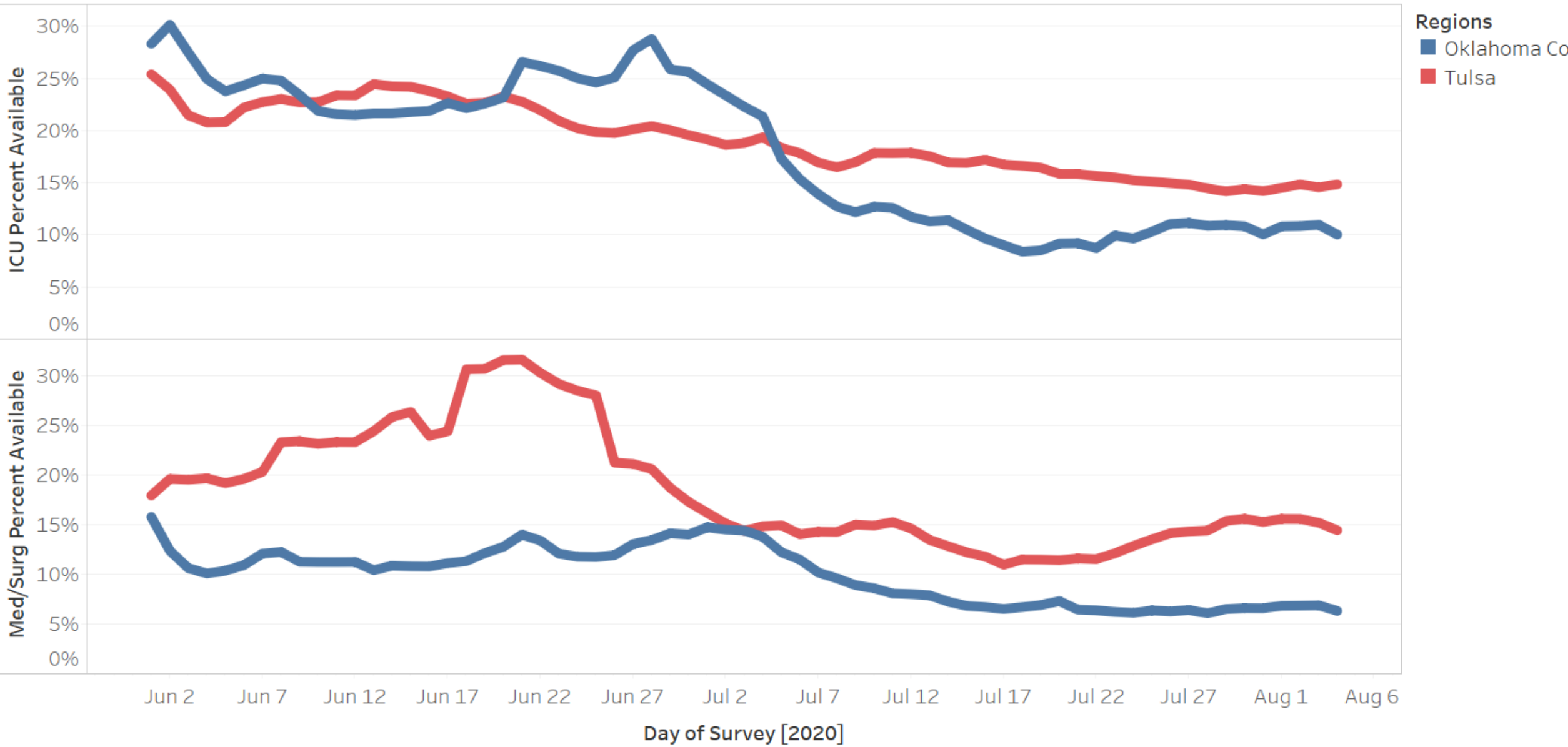
*Data Source: OHA Survey 4/3/2020*

Region	Medical/ Surgical Staffed Beds	ICU Staffed Beds	Surgical Specialty	Other Specialty (Rehab and LTAC)	Total Beds
<b>1 (NW)</b>	391	33	0	24	448
<b>2 (NE)</b>	381	48	0	0	429
<b>3 (SW)</b>	763	112	0	0	875
<b>4 (E Central)</b>	394	66	0	55	515
<b>5 (SE)</b>	299	17	0	0	316
<b>6 (Counties surrounding OK Cty)</b>	377	62	0	45	484
<b>7 (Tulsa)</b>	1464	489	98	192	2368
<b>8 (OKC)</b>	1255	405	266	408	2054
<b>Total</b>	<b>5324</b>	<b>1032</b>	<b>364</b>	<b>724</b>	<b>7444</b>

## Contracted Capacity in Beds in Regions 7 & 8 (contracted 07/2020)

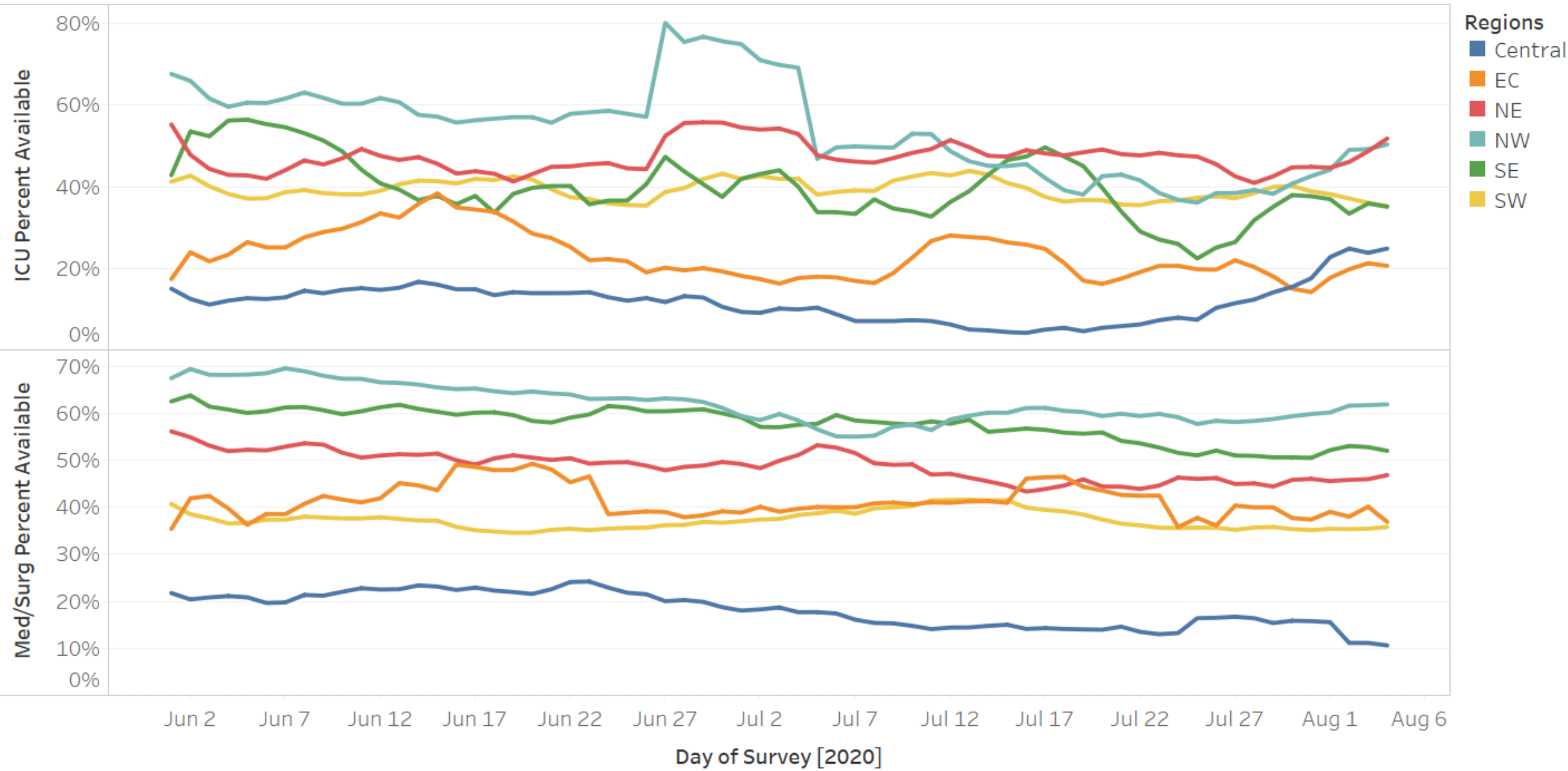
Region	Contracted Additional Beds	Contracted Hospitals
<b>7 (Tulsa Cty)</b>	125	OSU Medical Center
<b>8 (OK Cty &amp; Norman Regional Health System)</b>	120	AllianceHealth Midwest Integrus Baptist Medical Center Mercy Hospital OU Medical Center St. Anthony Hospital Norman Regional Health System
<b>8 (OK Cty)</b>	95 (if necessary)	Integrus Health System optional beds
<b>TOTAL</b> <i>Contracted Capacity Beds</i>	340	

# Percent of Available Beds by Region as reported through emResources (excluding Focus and Rehab Facilities)



7 Day Moving Average

# Percent of Available Beds by Region as reported through emResources (excluding Focus and Rehab Facilities)



7 Day Moving Average